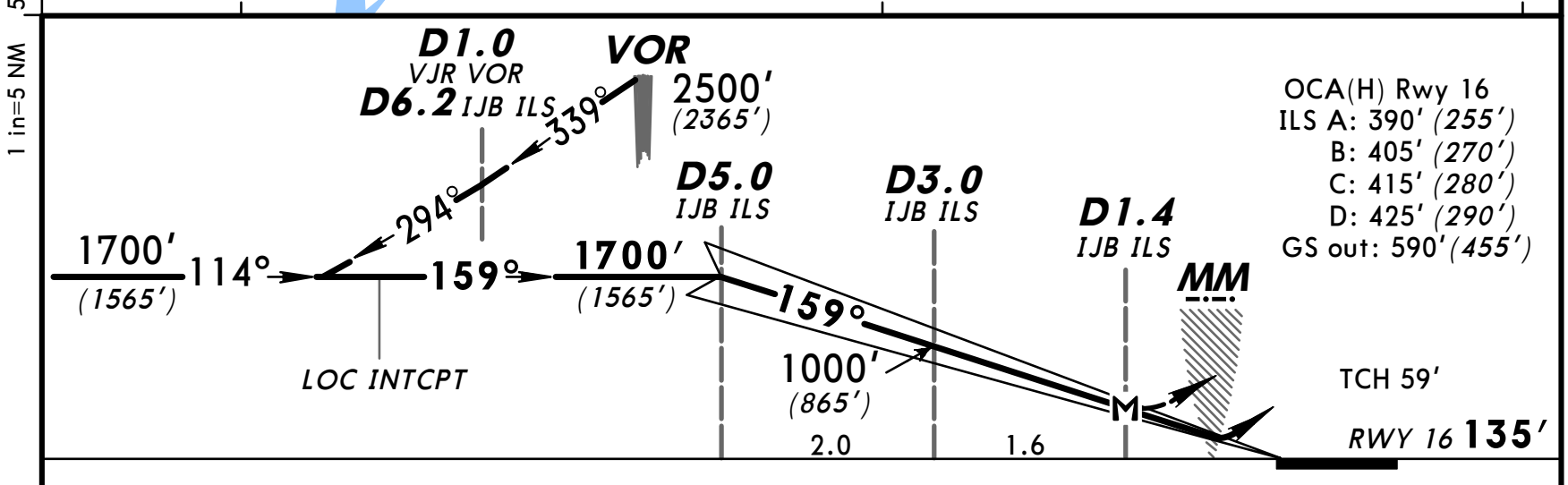
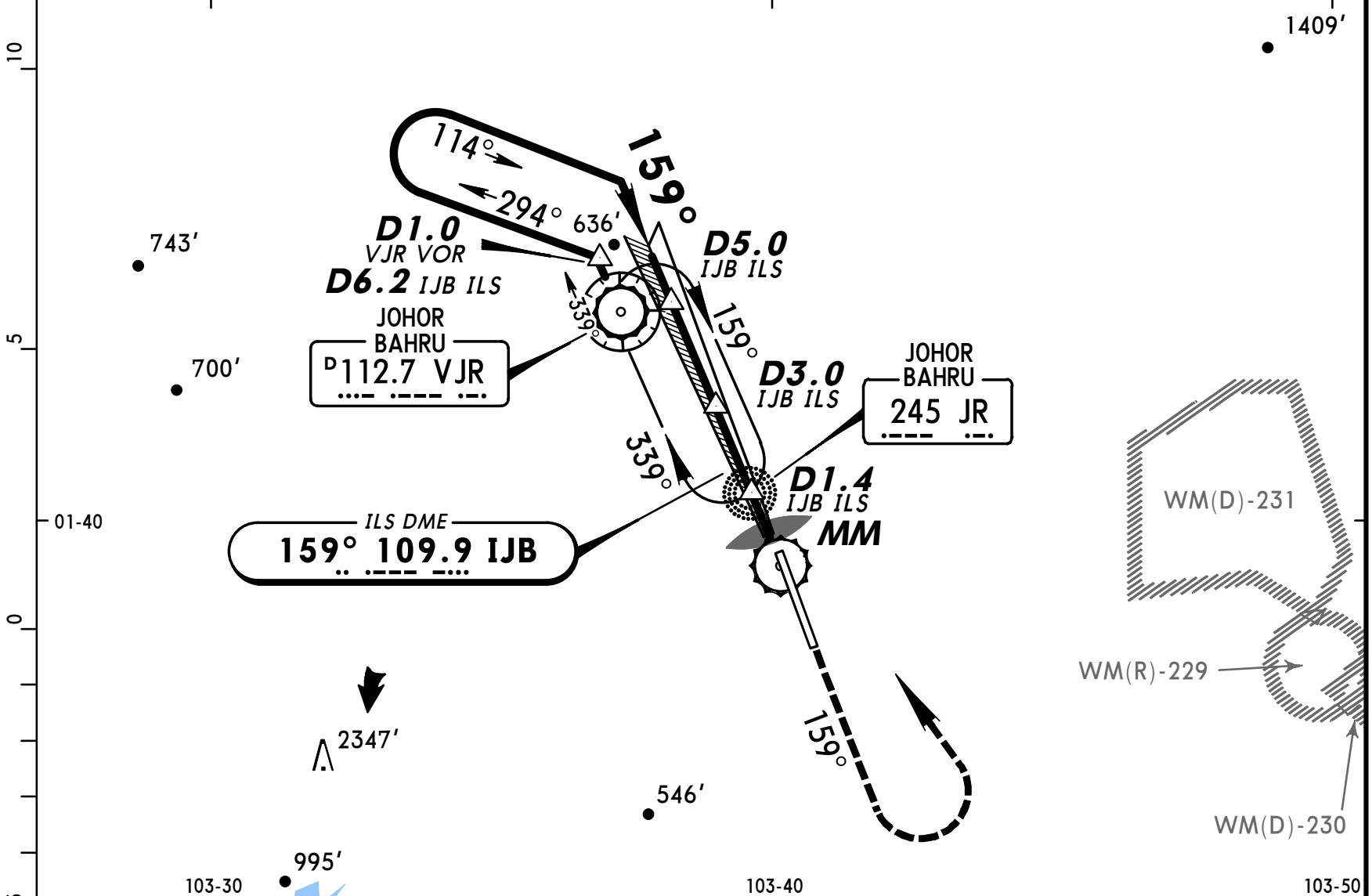


**WMKJ**  
**SULTAN ISMAIL**

22 DEC 00 **(11-1)**

**JEPPESEN JOHOR BAHRU, MALAYSIA**  
**VOR ILS Rwy 16**

*ATIS <b>126.6</b>		*JOHOR Approach <b>124.7</b>		*JOHOR Tower <b>122.5</b>		*Ground <b>121.8</b>		
LOC IJB <b>109.9</b>	Final Apch Crs <b>159°</b>	GS <b>D5.0</b> <b>1700'</b> (1565')	ILS DA(H) Refer to Minimums	Apt Elev <b>135'</b> RWY 16 <b>135'</b>		<p>MSA VJR VOR</p>		
<b>MISSED APCH:</b> Climb on 159° to 1000' or above, turn LEFT and return to holding pattern or as directed by ATC.								
Alt Set: hPa Rwy Elev: 5 hPa Trans level: FL 130 Trans alt: 11000' (10865')								



Gnd speed-Kts	70	90	100	120	140	160	PAPI ALS ↑ on 159° ← LT
ILS GS	3.00°	377	484	538	646	753	
LOC Descent Gradient	5.0%	355	456	507	608	709	

STRAIGHT-IN LANDING RWY 16				CIRCLE-TO-LAND	
ILS		LOC (GS out)		Max Kts	
A: DA(H) <b>390'</b> (255') C: DA(H) <b>415'</b> (280')		MDA(H) <b>590'</b> (455')		MDA(H)	
B: DA(H) <b>405'</b> (270') D: DA(H) <b>425'</b> (290')				100 <b>670'</b> (535') - 1900m	
FULL		ALS out		135 <b>670'</b> (535') - 2800m	
A				180 <b>1050'</b> (915') - 3700m	
B				205 <b>1050'</b> (915') - 4600m	
C	800m	1200m	1200m		
D			1600m		